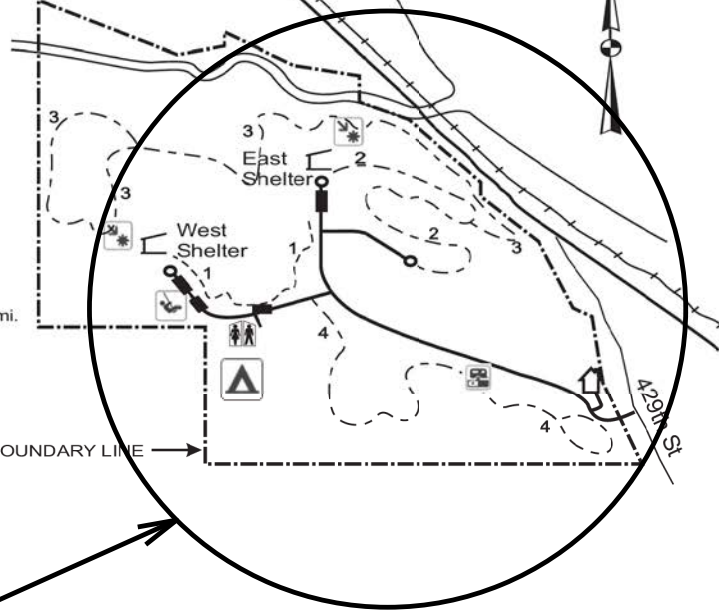


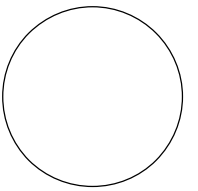
- NELSON UNIT**
- 1 OVERLOOK TRAIL
  - 2 INDIAN MOUNDS TRAIL ¼ mi.
  - 3 QUARRY TRAIL ¼ mi.
  - 4 MEADOW TRAIL ¼ mi.
  - 5 NATURE TRAIL ¼ mi.

- DYAS UNIT**
- 1 DEER TRAIL ½ mi.
  - 2 BLUFF TRAIL ½ mi.
  - 3 DUCK CREEK TRAIL 2 mi.
  - 4 CAMPGROUND TRAIL 1 mi.



**PROJECT LOCATION**

CONSULTANT:



**IOWA DEPARTMENT OF NATURAL RESOURCES**

ENGINEERING SERVICES - WALLACE BUILDING  
502 E. 9TH ST., DES MOINES, IA 50319-0034



**PROJECT LOCATION MAP**

PAVEMENT MAINTENANCE FOR:

**BELLEVUE STATE PARK**

MARION COUNTY

NO.	BY	REVISION

DRAWN BY: PROJECT NUMBER:  
23-02-49-02

CHK'D BY: DATE:

SHEET No:

**A.02**

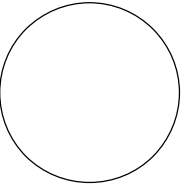




PAVEMENT PRESERVATION

ROAD	LENGTH (FT)	WIDTH (FT)	AREA (SY)	TJ REPAIRS (COUNT)	TJ REPAIRS ASPHALT (TONS)	MILES	FOG SEAL (GALS)	COMMENTS
200+00 - 200+72	72.0	20	160.0	4	4.9	0.01	24.0	
211+05 - 211+67 Parking Lot	85.0	16	151.2	--	--	0.02	22.7	
211+67 - 211+83 Driveway	16.0	37	65.8	--	--	0.00	9.9	
211+56 - 212+29 Parking Lot	70.0	25	194.5	--	--	.01	29.2	
300+10 - 314+37.5	1427.5	20	3172.3	3	3.7	0.27	475.9	
307+80 - 311+50 Parking Lot	426.0	62	2934.7	--	--	0.08	440.3	
600+00 - 650+20	5020.0	10	5577.8	53**	32.3	0.95	836.7	**Count for all 600 Stationing
650+20 - 651+20	100.0	Varies*	366.7	--	--	0.02	55.1	*Average width=33'
651+20 - 653+64	244.0	10	271.2	--	--	0.05	40.7	
648+87 - 650+84.5 Parking Lot	190.0	27	570.0	--	--	.04	85.5	
700+15 - 711+00	1085.0	20	2411.2	20	24.4	0.21	361.7	
711+00 - 712+20	120.0	10	133.4	3	1.9	0.02	20.1	
800+10 - 819+00	1890.0	20	4200.0	18**	--	0.36	630.0	**Count for all 800 Stationing
819+00 - 820+12	112.0	Varies*	410.7	--	--	0.02	61.7	*Average width=33'
820+12 - 822+40	228.0	16	405.4	--	--	.04	60.9	
818+17 - 820+00 Parking Lot	190.0	27	570.0	--	--	0.04	85.5	
1000+14 - 1005+00	486.0	20	1080.0	--	--	0.09	162.0	

CONSULTANT:



**IOWA DEPARTMENT OF  
NATURAL RESOURCES**

ENGINEERING SERVICES - WALLACE BUILDING  
502 E. 9TH ST., DES MOINES, IA 50319-0034



QUANTITIES AND GENERAL INFORMATION

PAVEMENT MAINTENANCE FOR:  
**BELLEVUE STATE PARK**

MARION COUNTY

NO.	BY	REVISION

DRAWN BY: PROJECT NUMBER:  
23-02-49-02

CHK'D BY: DATE:

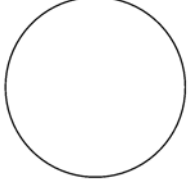
SHEET No:

**C.02**





CONSULTANT:



**IOWA DEPARTMENT OF  
NATURAL RESOURCES**

ENGINEERING SERVICES - WALLACE BUILDING  
502 E. 9TH ST., DES MOINES, IA 50319-0034



**SITE PLAN**

PAVEMENT MAINTENANCE FOR:

**BELLEVUE STATE PARK**

MARION COUNTY

NO.	BY	REVISION

DRAWN BY: PROJECT NUMBER:

23-02-49-02

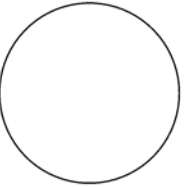
CHK'D BY: DATE:

SHEET No:

**D.01**



CONSULTANT:



**IOWA DEPARTMENT OF  
NATURAL RESOURCES**

ENGINEERING SERVICES - WALLACE BUILDING  
502 E. 9TH ST., DES MOINES, IA 50319-0034



**SITE PLAN**

PAVEMENT MAINTENANCE FOR:

**BELLEVUE STATE PARK**

MARION COUNTY

NO.	BY	DATE	REVISION

DRAWN BY: PROJECT NUMBER:  
23-02-49-02

CHK'D BY: DATE:

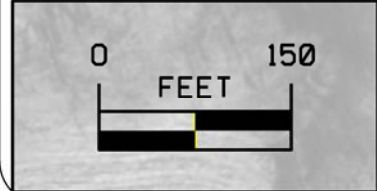
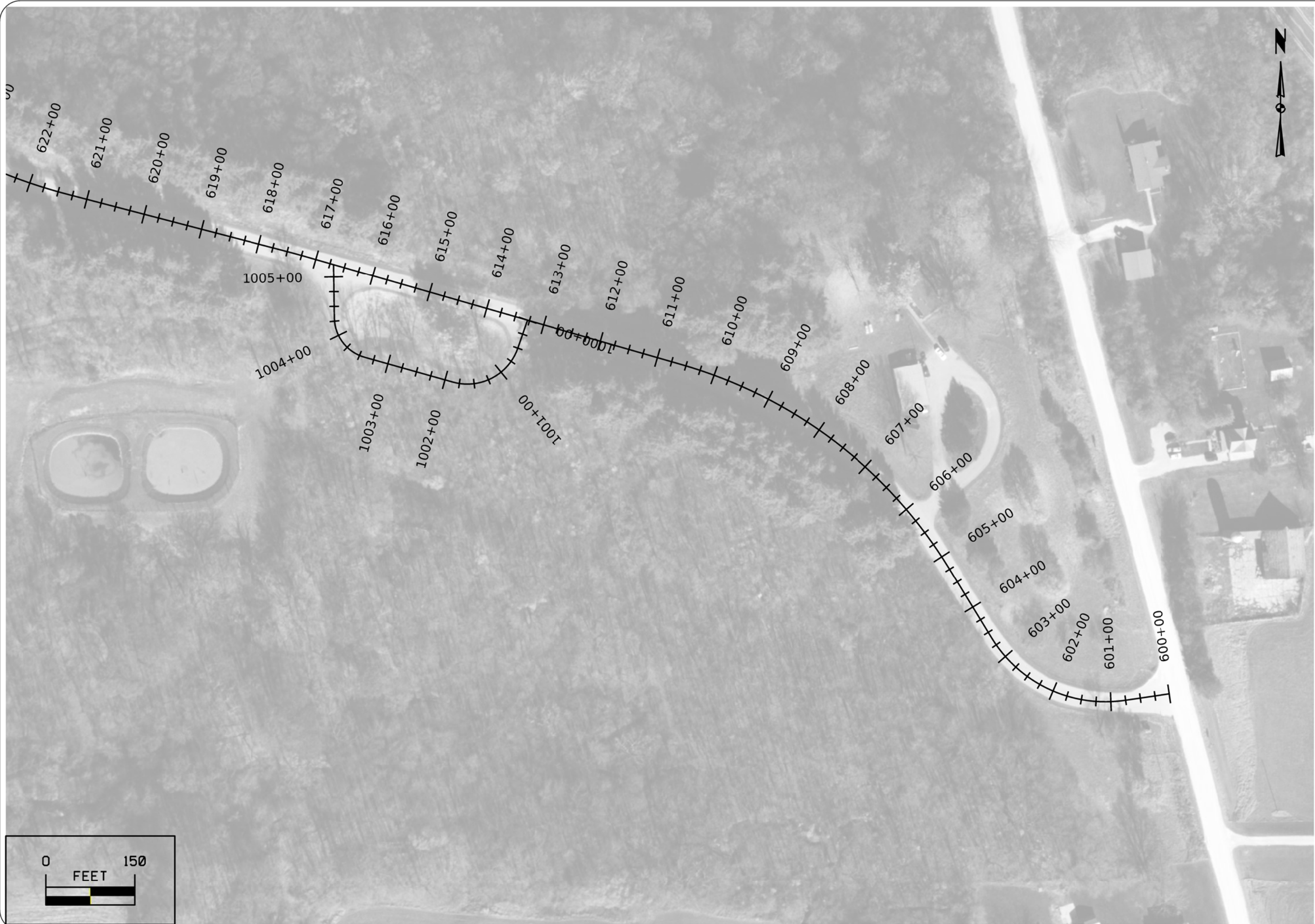
SHEET No:

**D.02**

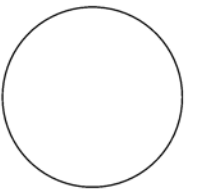








CONSULTANT:



**IOWA DEPARTMENT OF  
NATURAL RESOURCES**

ENGINEERING SERVICES - WALLACE BUILDING  
502 E. 9TH ST., DES MOINES, IA 50319-0034



**SITE PLAN**

PAVEMENT MAINTENANCE FOR:

**BELLEVUE STATE PARK**

MARION COUNTY

NO.	BY	REVISION

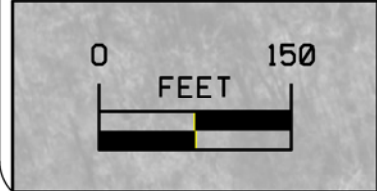
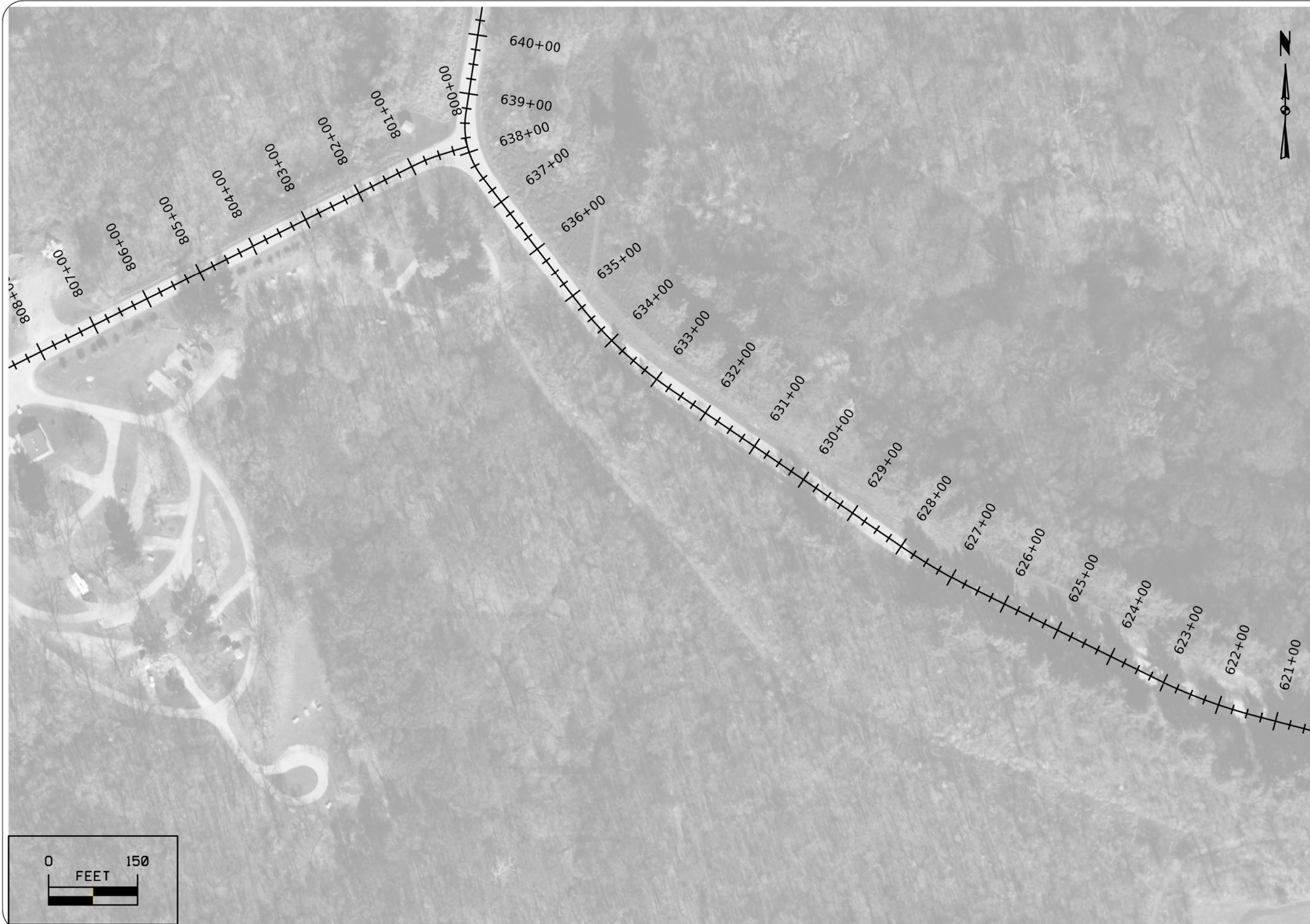
DRAWN BY: PROJECT NUMBER:  
23-02-49-02

CHK'D BY: DATE:

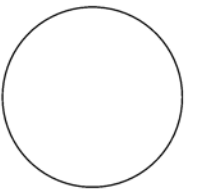
SHEET No:

**D.04**





CONSULTANT:



**IOWA DEPARTMENT OF  
NATURAL RESOURCES**

ENGINEERING SERVICES - WALLACE BUILDING  
502 E. 9TH ST., DES MOINES, IA 50319-0034



**SITE PLAN**

PAVEMENT MAINTENANCE FOR:

**BELLEVUE STATE PARK**

MARION COUNTY

NO.	BY	REVISION

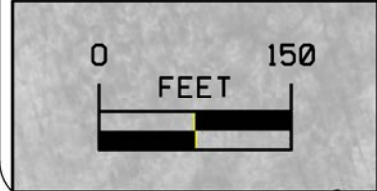
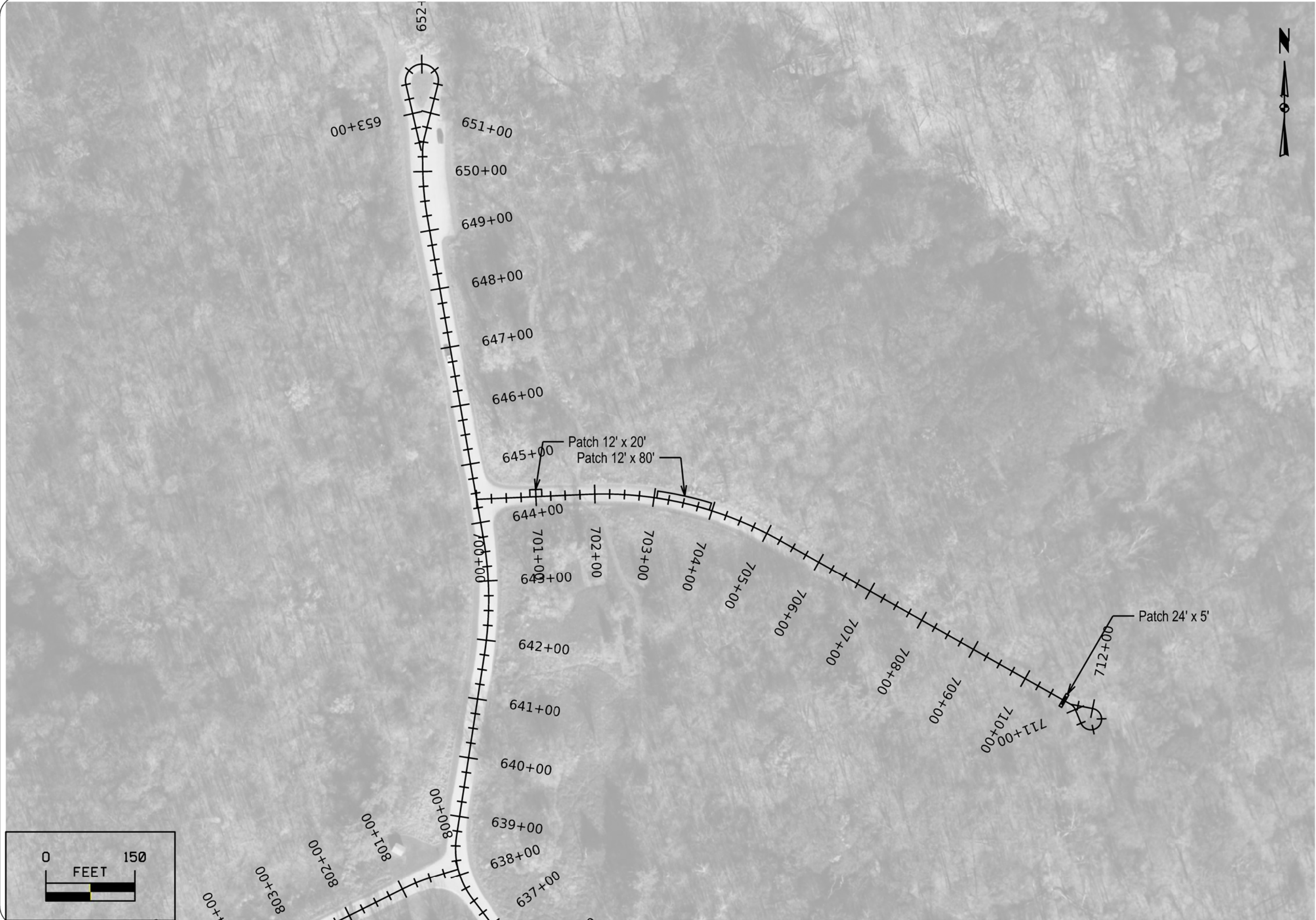
DRAWN BY: PROJECT NUMBER:  
23-02-49-02

CHK'D BY: DATE:

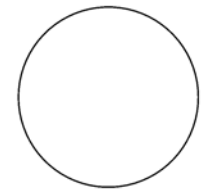
SHEET No:

**D.05**





CONSULTANT:



**IOWA DEPARTMENT OF NATURAL RESOURCES**  
 ENGINEERING SERVICES - WALLACE BUILDING  
 502 E. 9TH ST., DES MOINES, IA 50319-0034



**SITE PLAN**  
 PAVEMENT MAINTENANCE FOR:  
**BELLEVUE STATE PARK**  
 MARION COUNTY

NO.	BY	REVISION

DRAWN BY: PROJECT NUMBER:  
 23-02-49-02

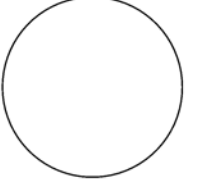
CHK'D BY: DATE:

SHEET No:  
**D.06**





CONSULTANT:



**IOWA DEPARTMENT OF  
NATURAL RESOURCES**

ENGINEERING SERVICES - WALLACE BUILDING  
502 E. 9TH ST., DES MOINES, IA 50319-0034



**SITE PLAN**

PAVEMENT MAINTENANCE FOR:

**BELLEVUE STATE PARK**

MARION COUNTY

NO.	BY	REVISION

DRAWN BY: PROJECT NUMBER:  
23-02-49-02

CHK'D BY: DATE:

SHEET No:

**D.07**